



88013247



# TECHNICAL NOTE

U.S. DEPARTMENT OF THE INTERIOR – BUREAU OF LAND MANAGEMENT

ALTERNATE METHOD FOR  
HERBARIUM MOUNTS

Rex L. Christensen  
Salmon District, Idaho



QL  
B4.2  
.L35  
no. 258



#424 2303

LD 88013247

DL  
84.2  
.235  
110.258

ALTERNATE METHOD FOR HERBARIUM MOUNTS

An employee suggestion submitted by Rex Christensen of the Salmon, Idaho office recommends a new procedure for mounting small plants for herbariums. This suggestion has been adopted for all Bureau offices on an optional basis.

The present practice of preparing plant mounts using a plant press is cumbersome and time consuming, and the resulting mount is not natural or satisfactory for field use. Also, the plant mounts deteriorate in paper folders.

This new method for preserving plants is limited to full mounts of forbs and grasses. Portions of larger plants can be prepared showing important characteristics necessary for identification. Plants mounted in this manner continue to look natural for many years.

Two sheets of clear, pressure sensitive adhesive coated plastic cellulose acetate, with removable paper backing, are needed for each mount. These sheets are available through GSA - No. 9330-618-7213 - in size 9" X 11-3/8", .0005" thick (other sizes are available if desired).

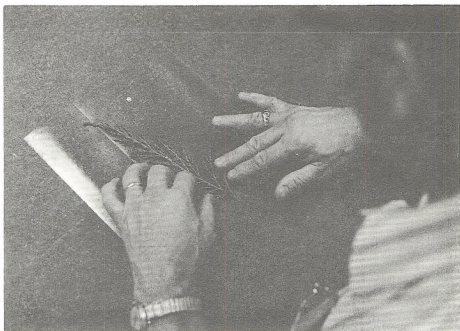
The procedure is easy and can be accomplished in the field as the plants are collected. Two things are important in making a successful mount: (1) The plant roots and stems must be free of dirt, and (2) The plant must not be wet.

Remove the paper backing from one plastic sheet and position it on a flat surface with the adhesive side up. Arrange the selected plant, which is clean and free of moisture, on the plastic to look as natural as possible. A small sheet of paper with pertinent information can be placed in one corner. Next, remove the backing from the second plastic sheet and position it with one edge against the edge of the first sheet, and then roll with the adhesive sides together, being careful to work the air out as it seals.

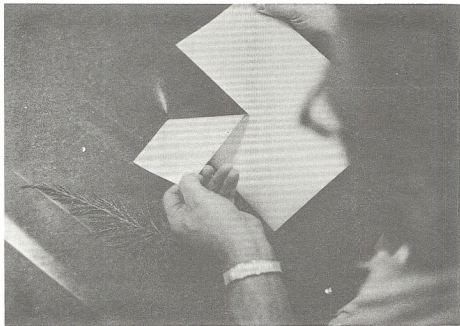
When arranging the plant on the first sheet of plastic, allow at least one inch around all the edges to assure a good seal.

These plant mounts can be placed in loose leaf binders for easy reference and without danger of breaking, as well as being put in a brief case and taken to the field.

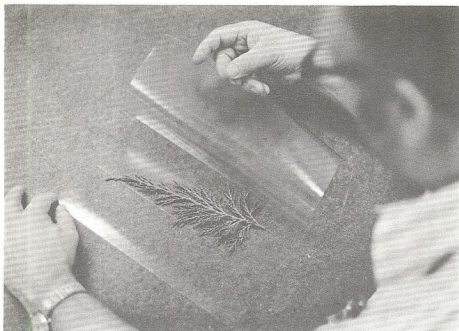
BLM Library  
D-553A, Building 50  
Denver Federal Center  
P. O. Box 25047  
Denver, CO 80225-0047



STEP 1 - Plant material is arranged on one plastic sheet to look as natural as possible.



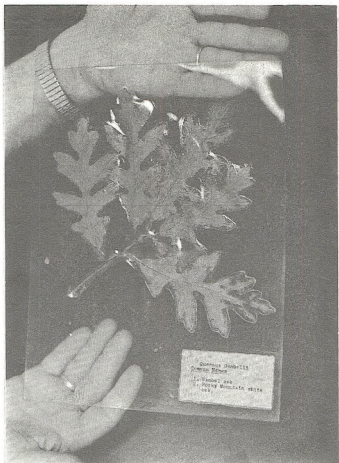
STEP 2 - Paper backing is removed from second sheet.



STEP 3 - Second sheet is positioned against first sheet, then rolled with adhesive sides together.



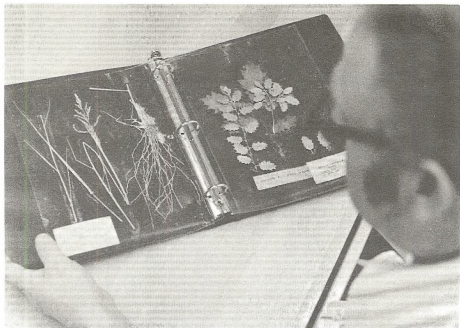
STEP 4 - Completed mount.



Portions of larger plants needed  
for identification can be mounted.



Mounts are adaptable for field use. (Note - these  
mounts are six years old.)



Mounts can be stored in loose leaf binders.

ELM Library  
D-553A, Building 50  
Denver Federal Center  
P. O. Box 25047  
Denver, CO 80225-0047

BLM Library  
D-553A, Building 50  
Denver Federal Center  
P. O. Box 25047  
Denver, CO 80225-0047

BLM Library  
D-553A, Building 50  
Denver Federal Center  
P. O. Box 25047  
Denver, CO 80225-0047





